

Health & Wellbeing Scrutiny

Homelessness and Winter Relief 21 /22

Tina Mustafa – AD Neighbourhoods & Sarah Finnegan
Head of Homelessness and Housing Solutions
19th October 2021

Outcomes

- Understanding Homelessness
- Sharing Progress on the rough sleeping initiative
- Informing the Winter relief Proposal

Department for Levelling Up, Housing and Communities

- ▶ Parliamentary under Secretary for Rough Sleeping and Housing Eddie Hughes MP– Jan 2021
- ▶ Previous role holders Dame Kelly Tollhurst and Luke Hall MP
- ▶ Responsible for a wide portfolio including: Homelessness, Rough Sleeping, private rented sector, social housing white paper etc...
- ▶ LA's have government HAST advisors they report to and are monitored by.

Page 17

<https://www.gov.uk/government/organisations/department-for-levelling-up-housing-and-communities>

HAST (Homelessness advice and support team)
Secretary of state and Minister for Rough Sleeping and Housing



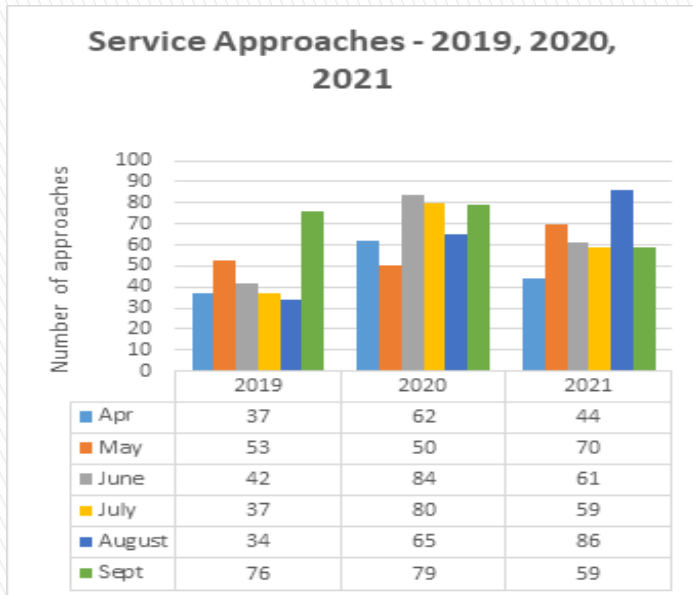
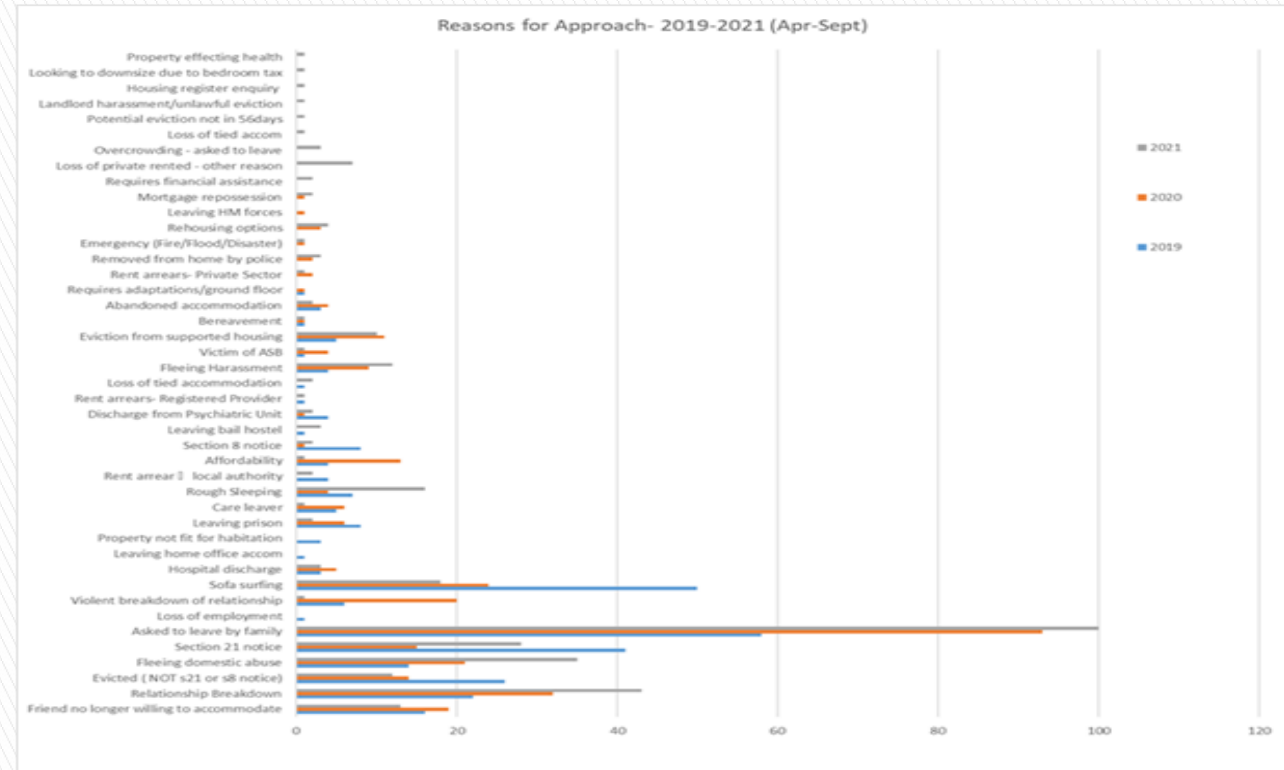
DLuHC– Homelessness and Rough Sleeping Strategy 2018

- ▶ Context – Govt Rough Sleeping Strategy sets out the government’s vision for halving rough sleeping by 2022 and ending it by 2025.
- ▶ Rough Sleeping strategy was published in 2018 – [The rough sleeping strategy – GOV.UK \(www.gov.uk\)](https://www.gov.uk/government/uploads/system/uploads/attachment_data/file/682212/rough_sleeping_strategy.pdf)
- ▶ Every Local Authority now has to publish its own RS and Homelessness prevention strategy 2020 – 2025 to ensure we are aiming towards their target. The strategy overarches all the work we do.
- ▶ Strategy is based around 3 core pillars, prevention, intervention and recovery and TBC is from 2020 –2023
- ▶ Sector research “housing disease” – ONS correlation between overcrowding, homelessness, lack affordable housing and more shared accomm like HMO is needed nationally

Actions, challenges & Achievements Data picture – ...”

- ▶ Rough sleeping transient &/or entrenched; temporary &/or communal
- ▶ Causation - asked to leave by family / friend no longer willing to accommodate, hidden homelessness and sofa surfing
- ▶ RS Count is 20th October anyone bedded down after 12 pm joint County decision (Nuneaton, Lichfield, Cannock etc)
- ▶ TBC aiming for 0 this year in RS estimate
- ▶ Assisted over 40 since Nov 19 - currently:-
 - 1 in B&B
 - Active cases open to RSI 4 Team 16
 - Active cases open to the homeless Team 130 4X officers, OOH rota
 - 20 in council TA- self contained
 - Several previous rough sleepers rehoused but struggling to sustain tenancy
 - Example: Cost B&B/TA based on average 30 nights x 18 - £25k
 - Govt assess each rough sleeper costs £14,300-£21,200 to public services

Page 19



- **CHALLENGES:**
- Unmet housing need – shortfall in numbers – land availability of 1 beds
- Gaps in specialist provision – behavioural rather than medical (mental health)
- Clients remain complex and chaotic and sustaining tenancies is the biggest challenge coupled with non-engagement
- Performance strong which inevitably limits external funding opportunities
- Impact wider health determinants
- Stakeholder expectations
- PRS realism around shared accomm for under 35yrs
- Revolving door of homelessness- Entrenched RS
- Poverty / Low incomes around affordability
- Cross border placements - Birmingham

Tamworth Rough Sleeping Count Target for 2021 is 0

Homelessness



Rough Sleepers

- Yearly Rough Sleeper figure return
- Entrenched or transient population
- Begging
- Priority need
- ½ BY 2022 end by 2025

Legislation

- Obligation of Housing Authorities
- Part 7 of Housing Act 1996
- Homelessness Act 2002
- Homelessness Reduction Act 2017
- Homelessness Code of Guidance 2018
- Homeless & RS Strategy 2020–2023
- Rough Sleeping Strategy 2018
- Children Act 1989
- Equality Act 2010
- Covid 19 response
- Data returns to MHCLG
- Part 6 Housing Act 1996 Housing Register

What is Homelessness?

You may be homeless if you're sleeping rough, don't have rights to stay where you are or you live in unsuitable housing.

- ▶ staying with friends or family
- ▶ staying in a hostel, night shelter or B&B
- ▶ squatting (because you have no legal right to stay)
- ▶ at risk of [violence or abuse in your home](#)
- ▶ living in poor conditions that affect your health
- ▶ living apart from your family because you don't have a place to live together

- ▶ Anyone – single or families
- ▶ Londoners – people are described as 1 pay cheque away from it
- ▶ Leaving home for the first time or leaving care
- ▶ [pregnant with nowhere to stay when the baby comes](#)
- ▶ Friends or family asking you to leave
- ▶ struggling to live on benefits or a low income and pay your rent
- ▶ Victims of domestic abuse
- ▶ Splitting up with partner
- ▶ from abroad without the right to claim benefits
- ▶ [an asylum seeker or refugee](#), [leaving prison](#), hospital discharge
- ▶ Being evicted
- ▶ Disaster such as fire or flood
- ▶ Hate crimes
- ▶ Severely overcrowded

You may count as homeless if you are:

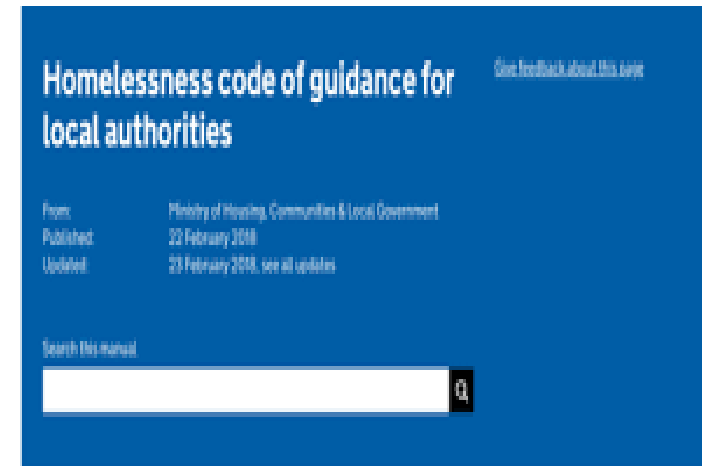
Who is affected?

Legal Definition of Homelessness – Housing Act 1996 Part VII S175.

Who is legally homeless? A person is legally defined as homeless if: [\[1\]](#)

- ▶ they have no accommodation available in the UK or abroad
- ▶ they have no legal right to occupy the accommodation
- ▶ they have a split household and accommodation is not available for whole household
- ▶ it is unreasonable to continue to occupy accommodation
- ▶ they are at risk violence from any person
- ▶ they are unable to secure entry to their accommodation
- ▶ they live in a moveable structure but have no place to put it
- ▶ Suitable, reasonable, affordable
- ▶ [Shelter Legal England – Legal definition of homelessness](#)

Page 22



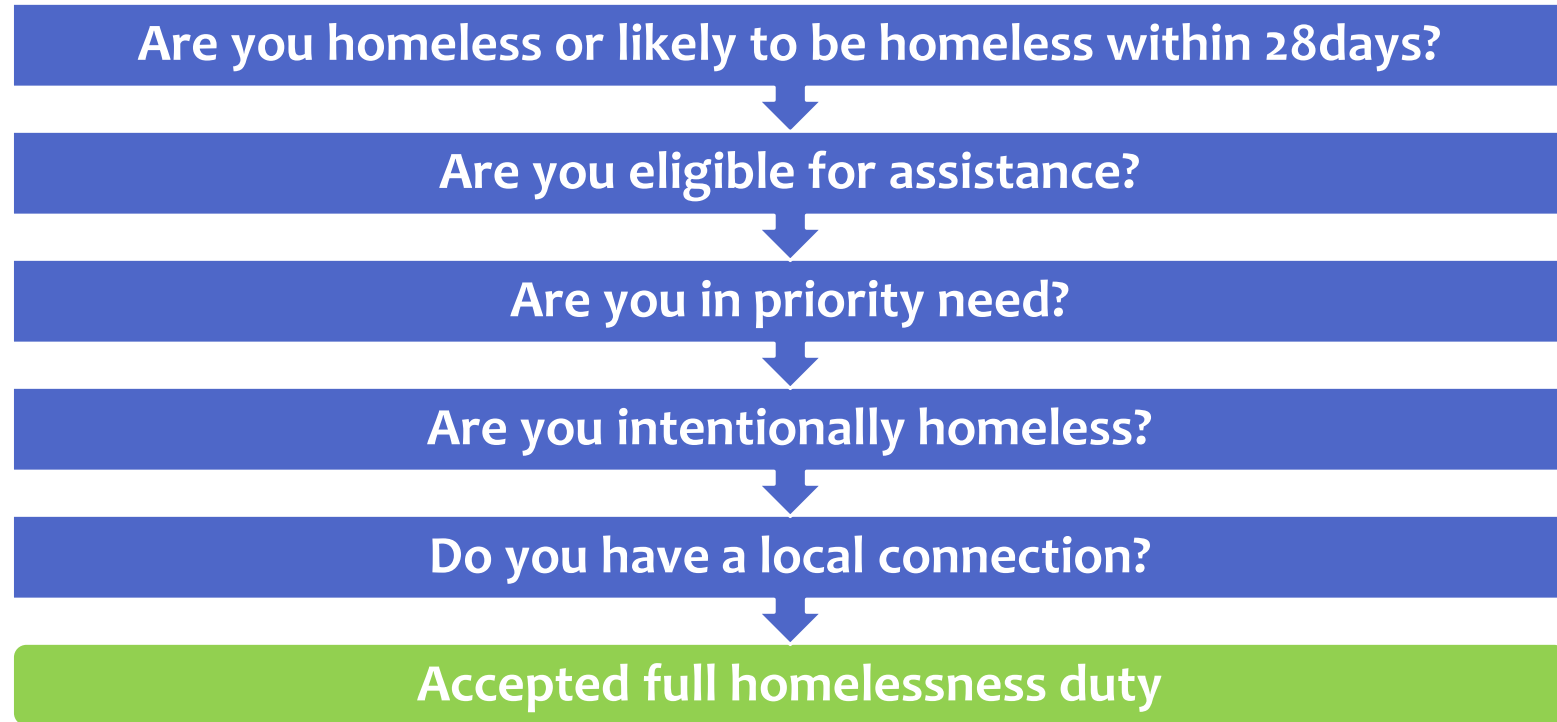
Contents > Chapter 6: Homeless or threatened with homelessness

Chapter 6: Homeless or threatened with homelessness

Guidance on how to determine whether a person is homeless or threatened with homelessness according to legislation.

Prior to 2018 and the Homeless Reduction Act

2017



New System

Are you eligible for assistance?

Are you homeless or likely to be homeless within 56 days?

NEW!

Prevention Duty - Reasonable steps to help you keep your home

NEW!

Relief Duty - Reasonable steps to help you find somewhere else to live

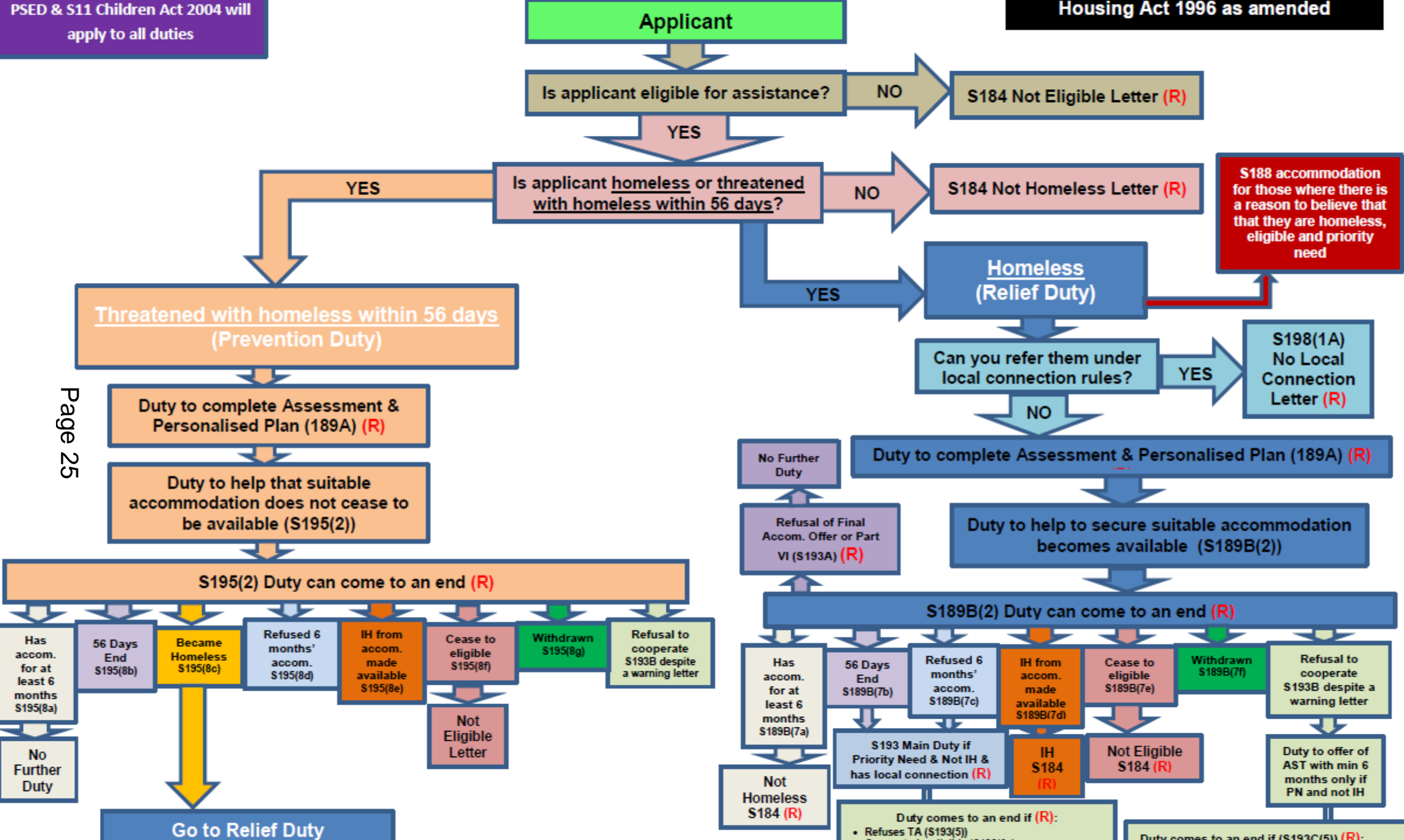
NEW!

Are you in priority need?

Are you intentionally homeless?

Do you have a local connection?

Full homelessness duty



Key changes: Prevention Duty	Relief Duty	Main Housing Duty
<ul style="list-style-type: none"> • Lasts 56 days • Prevent the accommodation being lost • Early intervention • Reduce pressure on emergency accommodation • Personal Housing Plan • Example– Section 21 served • Advice & assistance duty <p><u>Temporary Accommodation– Interim Duty S188</u></p>	<ul style="list-style-type: none"> • Lasts 56 days • Satisfied they are homeless and eligible • Not reasonable to remain • Duty to take reasonable steps to help applicant secure accom that is available for 6 months • Personal Housing Plan • Example– DA victim 	<ul style="list-style-type: none"> • Owed to an applicant if we are unable to Prevent or Relief their homelessness • 5 Test of homelessness • Eligible • Homeless • Priority need • Unintentionally homeless • Local connection

A local authority must provide interim accommodation while it makes inquiries if it has reason to believe that the applicant may be:

- homeless
- eligible for assistance, and
- in priority need. If all 3 are satisfied..... B&B/Council stock TA units can then be sought, dependant on case, Hostels (TCHA, Deventio, YMCA Burton) are also sought and private sector accommodation.



Feedback on Grant Funding from RSI 4

- ▶ Cabinet report in July 2021 updated on successful bid for the Rough Sleeping Initiative funding RSI4 (100K bid was awarded)
- ▶ To date have received £61,400.00
- ▶ Second tranche of funding due end of October £38,600.00
- ▶ 3 X new positions created, HS Out reach Officer, Mental health support worker and to be appointed in November Neighbourhood Coach
- ▶ £10K set aside for personal budgets for rough sleepers to support tailored interventions, support resettlement e.g, Paying for birth certificates, driving license for job prospects, passports, mobile phone to keep in touch with service, upcycles furniture from local charities, clothes for job interviews
- ▶ SWEP Winter relief £6400.00 and Begging initiative- Jan - June 21 £1200
- ▶ Tamworth has agreed with MHCLG and its HAST RS advisor, working document...End RS Plan which we are all focused on entwined with our Homelessness and RS Strategy 2020- 2023
- ▶ Currently have 16 clients open to the team who are receiving support
- ▶ From last November to date we have supported over 30 clients who were or previously rough slept, some are still in chaotic, complex cycle and need intense support
- ▶ Tamworth's RS cohort are White, Male, British nationals and between 35- 50
- ▶ The funding will support those with Utility hikes who may be unable to pay bills and choose to go back out...
- ▶ Last year RS estimate reported 5, this year our goal is 0
- ▶ Prospect of RSI 5 next February

IS ON TRACK!!

STILL MORE TO DO!!!

Reflection ~ Covid impact Winter 2020/21

Page 28

2019/20 winter (pre Covid)	2020/21 Winter – (Covid)
Night shelter operated– shared sleeping space	Place based support– mirror of housing first principles – both HoT and TBC agreed the wrap around support really worked for the vulnerable community members
Some engagement from service users in shelter, however some positive outcomes achieved. Focus on transient rough sleepers some with accommodation already available but attending for the social aspect	‘Everyone in’ Government initiative to support rough sleepers during Covid– 18+ were accommodated by TBC between March– August.
Tensions build within night shelter, police are called, small community impact noted	No reports of ASB at stand alone accommodations
Although some positive outcomes achieved, the cycle of homelessness was not ended in all cases	Engagement from each service user, increased working with the team
Support provided to collective group due to numbers in shelter, limited individual support.	HOT & mental health worker provided tailored support to individual which has resulted in positive outcomes

Winter Relief Proposal to Cabinet 11.11.21

- ▶ Continue to work with Heart Of Tamworth (HoT) cost £6400.00 from 1st Dec until end of February

Support includes:

- ▶ Both agreed that the wrap around support worked really well last year for the vulnerable members of Tamworth
- ▶ HoT would be happy to use this model going forward for this year, and have you advised that by necessity we have all learned to deliver services to clients in a different way and it worked well.
- ▶ Dedicated member of staff from HoT to work alongside TBC Housing solutions team
- ▶ Covid secure home visits
- ▶ Food parcel/ Hygiene pack deliveries
- ▶ Befriending – telephone & face to face
- ▶ Support while in TA such as speaking to other council departments as an advocacy service if need to
- ▶ Hand holding to getting forms completed (H-reg form now online)
- ▶ Providing a single point of contact for queries, linking in with RSI team
- ▶ Providing emotional support through listening and agreeing an action plan
- ▶ Hand holding to attend appointments within the community (banks, GP's)
- ▶ Upskilling, Job prospects, CV writing workshop, volunteering opportunities
- ▶ Referrals into Tamworth Advice Centre (TAC) financial/debt assistance
- ▶ Two way commitment between council and third sector, outcome focused.

Thank you for listening

Any questions, we
welcome your views...